

# 2018 RENEGADE<sup>®</sup> BACKCOUNTRY<sup>™</sup> X<sup>®</sup> 850 E-TEC<sup>®</sup> **NEW**



RENEGADE<sup>®</sup> BACKCOUNTRY<sup>™</sup> X<sup>®</sup> 850 E-TEC<sup>®</sup> shown

## PACKAGE HIGHLIGHTS

- REV<sup>®</sup> Gen4 platform
- pDrive<sup>™</sup> clutch with clickers
- cMotion<sup>™</sup> rear suspension
- RAS<sup>™</sup> 3 front suspension
- 15 x 146 x 1.6 in. Cobra or Ice Cobra or 16 x 146 x 2.0 in. PowderMax<sup>†</sup> track choice
- KYB<sup>†</sup> Pro 36 aluminum piggyback rear shock with Easy-Adjust compression adjusters (22 clics)
- Brembo racing brake with braided stainless-steel brake line
- RER<sup>™</sup> electronic reverse
- Adjustable ski stance
- RF D.E.S.S.<sup>™</sup> key
- Standard electric start
- Performance trail seat
- Transparent handguards
- Warm glove box with 4 L / 1 US gal of storage
- Open toe-hold

## ROTAX<sup>®</sup> ENGINE

Engine details	850E-TEC <sup>®</sup>
Cylinders	Liquid-cooled, electronic R.A.V.E. <sup>™</sup> 2
Displacement	849 cc / 51.9 in. <sup>3</sup>
Bore	82 mm / 3.2 in.
Stroke	80.4 mm / 3.2 in.
Maximum engine speed	7,900 RPM
Carburation	Electronic Direct Injection with additional booster injectors
Recommended fuel type	Premium unleaded
Minimum octane	91
Fuel tank	36 L / 9.5 US gal
Oil tank capacity	3.4 L / 3.6 qt

## POWERTRAIN

Drive clutch type	pDrive <sup>™</sup>
Driven clutch type	QRS
Engagement	3,600 RPM
Small sprocket number of teeth	21 (Cobra 1.6, Ice Cobra 1.6) 23 (PowderMax <sup>†</sup> 2.0)
Large sprocket number of teeth	45 (Cobra 1.6, Ice Cobra 1.6) 51 (PowderMax <sup>†</sup> 2.0)
Drive sprocket number of teeth	8
Drive sprocket diameter	183 mm / 7.2 in.
Brake system	Brembo racing brake with stainless-steel braided brake line

## DRY WEIGHT

217 kg / 478 lb

## FEATURES

Frame	REV <sup>®</sup> Gen4	Starter	Electric	Mirrors	Optional
Skis	Pilot <sup>™</sup> DS 2	Reverse	RER <sup>™</sup>	Windshield	360 mm / 14 in.
Seating	Trail performance	Heated throttle lever	Standard	Runner	Square 5/16
Handlebar	Aluminum with J-hooks / Grab handle	Heated grips	Standard	Carbide configuration	102 mm / 4 in. at 90°
Riser block height	120 mm / 4.7 in.	Gauge	Analog with display	Hitch	Optional

## COLOR

Octane Blue / Manta Green   
Black 

## DIMENSIONS

Vehicle overall length	3,275 mm / 129 in.
Vehicle overall width	1,140 to 1,180 mm / 44.9 to 46.5 in.
Vehicle overall height	1,359 mm / 53.5 in.
Ski stance	975 or 1,020 mm / 38.4 or 40.2 in.
Ski overall length	1,040 mm / 41 in.
Track nominal width	381 mm / 15 in. Cobra or Ice Cobra or 406 mm / 16 in. PowderMax <sup>†</sup>
Track nominal length	3,705 mm / 146 in.
Track profile height	40.6 mm / 1.6 in. Cobra
Optional track	50.8 mm / 2.0 in. PowderMax <sup>†</sup> 40.6 mm / 1.6 in. Ice Cobra

## SUSPENSION

Front suspension	RAS <sup>™</sup> 3
Front shock	HPG <sup>™</sup> Plus
Front suspension max. travel	220 mm / 8.7 in.
Rear suspension	cMotion <sup>™</sup>
Center shock	HPG <sup>™</sup> Plus
Rear shock	KYB <sup>†</sup> Pro 36 EA
Rear suspension max. travel	239 mm / 9.4 in.



RENEGADE® BACKCOUNTRY™ X® 850 E-TEC® shown



RENEGADE® BACKCOUNTRY™ X® 850 E-TEC® shown

## FEATURE HIGHLIGHTS



### cMotion™ rear suspension

Crossover-specific suspension uses best principles of the rMotion™ trail and tMotion™ mountain skids for confident cornering and agile boondocking.



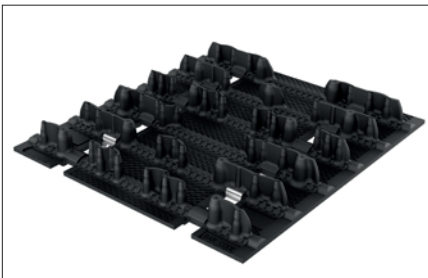
### Rotax® 850 E-TEC® engine

Next generation of the most advanced direct-injection two-stroke engine technology. Designed for reliability and durability with proven 4-stroke and diesel technologies.



### pDrive™ clutch

Fast and friction-free dual rollers transfer torque in place of traditional sliding buttons on this 100% new clutch. Ultra-responsive shifting, impressive RPM consistency and lightweight.



### Cobra 15 x 146 x 1.6 in. track

This track features combination of flexible cupped lugs for superior off-trail performance and more rigid lugs for added traction on hard-packed snow.



### Transparent handguards

Their design increases protection and makes sleds look even lighter. They're ready for industry-first LED accent lighting, flip-out mirrors and semi-rigid extensions. (Available as accessories).

## GAUGE FEATURES

Speedometer	Standard
Tachometer	Standard
Fuel	Standard
Engine temperature	Optional